

There are only two unit designs at Coral Beach, One Bed Room and Studio.

In some cases two units have been combined by an owner to accommodate their living style.

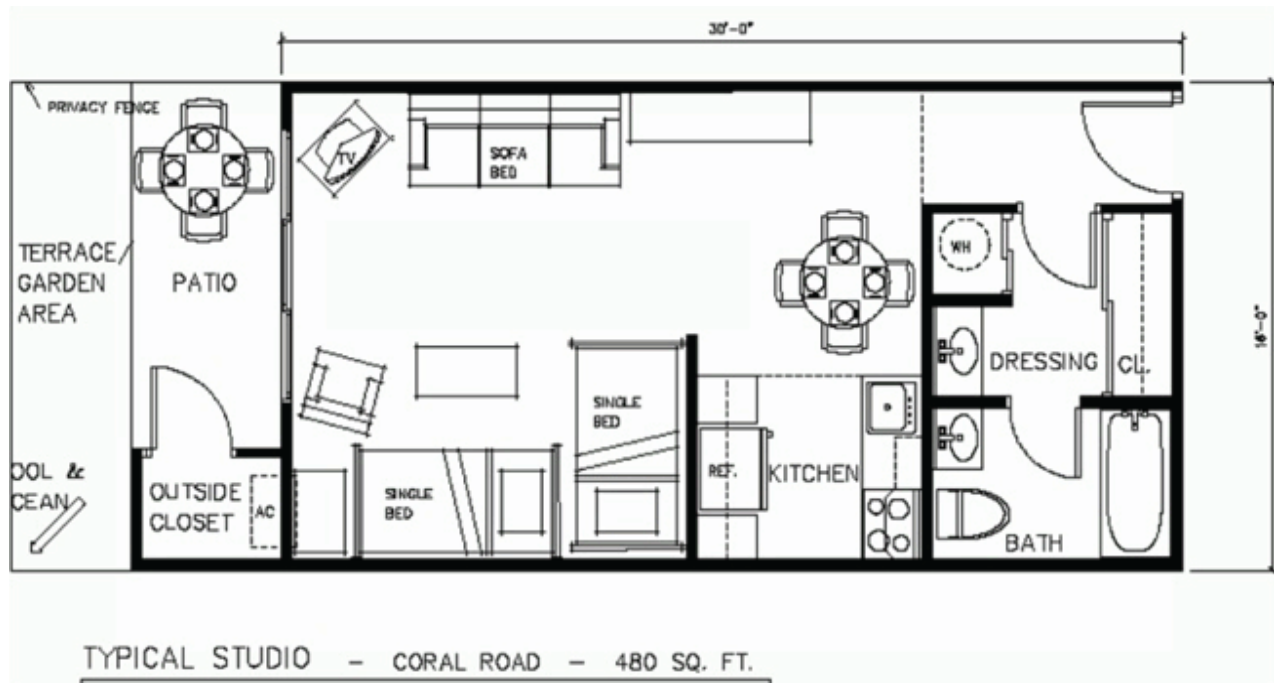
However each unit is always deeded and conveyed separately.

When a unit is sold or purchased the legal description and size must conform to one of these layouts or multiples of.

The Balcony's / storage area attached to each unit is assigned to that unit, the owners are responsible for repairs or maintenance.

Units abutting Terraces do not own the terraces . All terraces are Common Area.

Only terraces referenced by the Amendment to the Declaration of Condominium may be the exception.



There are only two unit designs at Coral Beach, One Bed Room and Studio.

In some cases two units have been combined by owners to accommodate their living style. However each unit is always deeded and conveyed separately.

When a unit is sold or purchased the legal description and size must conform to one of these layouts or multiples of.

The Balcony's / storage area attached to each unit is assigned to that unit, the owners are responsible for repairs or maintenance.

Units abutting Terraces - The terraces are not part of the Unit. All terraces are Common Area. Only terraces referenced by the Amendment to the Declaration of Condominium may be the exception.